

# Identification of Cu and Ni indicator plants from mineralised locations in Botswana

Bonang B.M. Nkoane <sup>a,b,\*</sup>, Gerald M. Sawula <sup>a</sup>, Grethe Wibetoe <sup>b</sup>, Walter Lund <sup>b</sup>

<sup>a</sup>Department of Chemistry, University of Botswana, Private Bag UB 0074, Gaborone, Botswana

<sup>b</sup>Department of Chemistry, University of Oslo, P. O. Box 1033, N-0315 Oslo, Norway

## Abstract

Plant species that accumulate high levels of metals in proportion to the metal content in the soil are of considerable interest in biogeochemical and biogeobotanical prospecting. This study was aimed at investigating copper and nickel accumulation in the plants *Helichrysum candolleianum* and *Blepharis diversispina*, to assess their potential use as mineral indicators in biogeochemical prospecting. Soils and plants were collected from copper-nickel mineralised areas in Botswana. Analyses of the soils and the respective plant parts (roots, stem, leaves and flowers) were carried out using ultrasonic slurry sampling electrothermal atomic absorption spectrometry (ETAAS), which allowed rapid determination of copper and nickel in small amounts of the samples.

The metal concentration in the soil was in the range  $\approx 40 \mu\text{g/g}$ –4% (w/w) for Cu and  $\approx 60 \mu\text{g/g}$ –0.3% (w/w) for Ni. The concentration ranges of the elements in the plant parts were  $\approx 6 \mu\text{g/g}$ –0.2% Cu and  $\approx 3$ –210  $\mu\text{g/g}$  Ni. At high soil metal content (greater than 2.5% (w/w) Cu and 0.1% (w/w) Ni), high levels of both nickel and copper were found in the shoots (leaves and flowers) of *H. candolleianum*. Concentrations as high as 0.2% (w/w) Cu were found in the leaves and flowers of *H. candolleianum*, indicating hyperaccumulation for this plant. For *B. diversispina*, the metal concentrations did not exceed 100  $\mu\text{g/g}$  for any plant part, for both metals. Both plant species tolerate high concentrations of metals and should therefore be categorized as metallophytes. In order to evaluate metal translocation from the soil to the shoots, metal leaf transfer coefficients (ratio of metal concentration in the leaf to metal concentration in the soil) were calculated. Our data suggest that the two plant species have different metal uptake and transport mechanisms, which needs to be investigated further. The present work also suggests that *H. candolleianum* may be used as a copper/nickel indicator plant in biogeochemical or biogeobotanical prospecting.

**Keywords:** *Helichrysum candolleianum*; *Blepharis diversispina*; Copper; Nickel; Indicator plants; Metallophytes

---

## 1. Introduction

Metal-tolerant plants have been extensively studied for various reasons, including their potential use in prospecting for minerals (Dunn et al., 1996; Brooks, 1998a) and in cleaning up or remediation of heavy metal contaminated soils (i.e., phytoremediation, phytoextraction processes) (Raskin et al., 1997; Van der Lelie et al., 2001; Vassilev et al., 2004).

Biogeochemical and biogeobotanical prospecting are some of the methods in which metal-tolerant plants are used to indicate the presence of minerals (Brooks, 1998b; Reeves and Baker, 2000; Adriano, 2001). Biogeochemical prospecting involves chemical analysis of plants, as an alternative to soil analysis, in order to detect the presence of mineralization beneath the earth surface (Brooks, 1972). For example, twigs of the black spruce (*Picea mariana*) were used to delineate uranium in Wollaston, Saskatchewan, Canada (Brooks, 1998b). In cases where the plant grows only in mineralized areas, once the plant has been identified as a good mineral indicator, just its presence can be used to identify the minerals in the soil i.e., geobotanical prospecting. For example, the ‘Zambian copper flower’ *Becium centraliafricanum* (*B. homblei*), has been used extensively in locating copper in the Shaba Province of Zaire (now the Democratic Republic of Congo) and the Zambian copper belt (Brooks, 1998b; Brummer and Woodward, 1999; Malaisse et al., 1999; Morrison et al., 1981).

In Botswana, biogeochemical studies have been done in the Ghanzi and Ngwako Pan areas in the late 1960s to late 1970s, in order to investigate unknown but inferred copper mineralization hidden underneath the calcrete and Kalahari sand covers (Cole and Le Roex, 1978). In the Ghanzi area, Cole and co-workers were able to use *Helicrysum leptolepis* DC (Compositae family) to indicate copper mineralization in areas of shallow overburden; while in the Ngwako Pan area, Ngamiland, the deeper rooting indicator shrubs such as the blue flowering *Ecbolium lugardae* (Acanthaceae family) were used to locate copper obscured by a thick blanket of wind-blown sand (Cole and Le Roex, 1978). At about the same time, *E. lugardae* was found at the Palaborwa and Messina copper mines (Cole and Le Roex, 1978). *H. leptolepis* has also been found in areas where copper and nickel concentration of surface soil was high, such as Selibe-

Phikwe and Matsitama areas in eastern Botswana and other places in South Africa and Namibia where copper was found (Cole, 1971). Although these species were found in areas where there was copper mineralization (0.1% Cu), the copper accumulated was only slightly higher than in normal plants. Another record of biogeochemical work was in the early 1990s by Kausel in the Ngwako Pan area, who found out that the occurrence of the blue flowering species, *Monechma divaricatum*, correlated well with the occurrence of the copper bearing orebody near the surface, although the copper concentration in the plant was not higher than normal (Kausel, 1991).

In the early 1990s, work aimed at identifying plants that tolerate high copper and nickel content started at the University of Botswana (Takuwa et al., 1997), with plants from the north-east of Botswana (see Fig. 1). Survey studies conducted in our laboratories (Takuwa, 1995; Takuwa et al., 1997; Ramocha, 2002) have revealed elevated levels of copper and nickel in *Helicrysum candolleianum* H. Baek (Asteraceae family) and *Blepharis diversispina* (Nees) C. B. Clarke (Acanthaceae family) amongst other plants.

Baker (1981) proposed two different strategies that metal-tolerant plants can use to cope with high levels of metals in the soils they grow in—exclusion (from the shoot) and accumulation (in the shoot). Based on these strategies, Baker (1981) suggested three types of plant–soil relationships: excluders, accumulators and indicators.

Excluders are defined as plants that restrict transport of metals to the shoot, and maintain relatively low metal concentration in the shoot over a wide range of metal concentrations in the soil. High metal accumulation may be found in the roots of excluder plants and their leaf to root metal concentration ratio is less than 1.0 (Baker, 1981; Baker and Brooks, 1989; Terry and Bañuelos, 2000). There can be another type of exclusion, whereby metals are restricted from entering the plant (Tilstone and Mcnair, 1997).

The accumulators show a tendency or ability to translocate and accumulate high levels of metal in the above-ground plant parts, from both low and high soil metal concentration levels, without any associated toxicity symptoms, i.e., their leaf to root metal concentration ratio is greater than 1.0 (Baker, 1981; Baker and Brooks, 1989; Tilstone and Mcnair, 1997; Terry and Bañuelos, 2000). For indicator



**Legend:**

- A: Selkirk, about 35 km north east of Francistown;  
GPS location: S 21° 18', E 27° 44', Altitude: 1018 m
- B: Nakalakwana, about 60 km from Francistown, long Francistown-Orapa road;  
GPS location: S 21° 05', E 26° 59', Altitude: 1117 m
- C, D: Thakadu and Malaka, respectively, are about 82 km from Francistown, 5 km off Francistown Orapa road, and 2 km apart  
GPS locations: Thakadu S 21° 03', E 26° 46', Altitude: 1058 m  
Malaka: S 21° 02' E 26° 45', Altitude: 1044 m

Fig. 1. Map of Botswana showing the four Cu-Ni mineralized sampling areas in the North-Eastern part of Botswana.

plants, an intermediate response to high metal concentration in the soil is shown, and the metal in plants reflects the concentration in the soil, i.e., the plant to soil metal concentration ratio is relatively constant (Baker, 1981).

Hyperaccumulators are defined as plants that accumulate 100-fold more metal in their shoots than normal plants (Brooks et al., 1977, 1980; Brooks, 1998a; Reeves and Baker, 2000; Terry and Bañuelos, 2000). For Cu, Co, Cr, Ni or Pb

this concentration is  $>1000 \text{ mg kg}^{-1}$  (Baker and Brooks, 1989). Hyperaccumulators can simply be viewed as accumulator plants that show an extreme behaviour of affinity towards metal uptake and translocation to the shoots. This unique characteristic of hyperaccumulators has sparked great research interest, and the continuous search for this type of plants, especially for possible use in the remediation of heavy metal contaminated soil. Although most hyperaccumulators are endemic to metal-rich soils, there are some that grow in soils with a low metal content, such as the *Arabidopsis Halleri*, which is a Zn- and Cd-accumulator (Bert et al., 2000). According to Brooks (1998a), good biogeochemical indicator plants have an “approximately linear relationship between elemental content in the plants and the concentration of the same element in the soil”. This suggests that not every hyperaccumulator plant would be a good mineral indicator.

In this work, we investigate accumulation of copper and nickel in plants in order to assess their potential use as mineral indicators. This is because Botswana's economy is largely dependent on mining (diamonds, soda ash and Cu–Ni): Botswana is amongst Africa's top three mineral producers by value (Ekosse et al., 2003). Furthermore, most of the land (two-thirds) consists of the Kalahari dessert, which is covered with wind-blown sand, but might have mineral deposits that would be difficult to delineate using ordinary geological methods. Therefore, better and effective ways of mineral exploration, which are more environmentally friendly than earth drilling, should be found. A study was undertaken to investigate metal accumulation in two plant species, *H. candolleianum* and *B. diversispina*, collected from four Cu–Ni mineralized areas in Botswana. Attention was paid to these two plant species because earlier (unpublished) survey studies done in our laboratory suggested that these plants accumulate high amounts of copper and nickel. Analyses of the plant parts enabled us to determine the ‘sink’ of the metal taken up by the plants and consequently determine the type of metal tolerance, based on whether the plant was able to translocate the metal to the upper parts.

Ultrasonic slurry sampling electrothermal atomic absorption spectroscopy (ETAAS) methodology, de-

veloped in our earlier work (Takuwa et al., 1997) was applied for the determination of Cu and Ni. This method has the advantage that it offers straight analysis of slurried samples without prior sample decomposition and minimal sample is required. Its advantages over methods based on conventional decomposition include: high sample throughput, reduction in sample pretreatment time, minimization of contamination by avoiding sample manipulation (e.g., digestion, filtration), elimination of the need for costly digestion vessels, high purity reagents and hazardous chemicals (acids), and minimal sample loss through volatilizations (Frame and Anderson, 1996). Biogeochemical prospecting relies on “cheap and rapid methods” of chemical analysis (Brooks, 1972, 1983; Brummer and Woodward, 1999) and given the advantages stated above, slurry sampling ETAAS method became the method of choice. The results obtained in this study indicate higher accumulation levels of copper and nickel than usually found in normal plants. Besides work done in our laboratories (Takuwa, 1995; Takuwa et al., 1997; Ramocha, 2002), to the best of the author's knowledge, *H. candolleianum* and *B. diversispina* are not among the plants that have previously been reported to accumulate copper and nickel. Takuwa et al. (1997) did some analysis of *H. candolleianum* and *B. diversispina* plant species collected from Selkirk. However, the focus of their study was on method development, not soil–plant relationship, and therefore they analysed only one plant for each plant species. The metal content in the soil for the plants they analysed was not indicated.

## 2. Materials and methods

### 2.1. Equipment and apparatus

Milli-Q water purification system, A10 (Millipore, South Africa) was used for production of ultrapure water. Grinding of the soil and plant samples was done with MM 2000 mixer mill (Retsch, Hann, Germany) equipped with two 10 ml grinding cups and two 10 mm beads in each cup, all made of zirconium oxide. For homogenizing of the slurry samples, an ultrasonic processor, VT 50T Vibra Cell (Sonic Materials Inc., Danburg CT, USA) with a 3 mm (o.d.) titanium probe was used. A Varian Spectra

AA-400 Plus Electrothermal Atomic Absorption Spectrometer (Mulgrave, Australia) equipped with a Varian GTA-96 graphite tube atomizer, Zeeman background corrector, an autosampler and interfaced with a Compac 486 computer with an Epson LX 400 printer, was used. Pyrolytically-coated Varian graphite tubes and Varian hollow cathode lamps were used.

## 2.2. Reagents and materials

Freshly prepared ultrapure water ( $18 \text{ M}\Omega \text{ cm}^{-1}$ ), was always used. The reagents used were: Triton X-100 (BDH, Poole, England), metal ions stock solutions of 1000 mg/L (Saarchem, Johannesburg, South Africa) and supra pure concentrated nitric acid (65%) (Merck, Germany).

Certified reference materials (CRMs), Chinese soils GBW 07407 (yellow-red soil), GBW 07406 (laterite) and Fluka Olive leaves BCR 62 (Olea Europea), were obtained from the Laboratory of Government Chemists (Teddington, England) and were used as received.

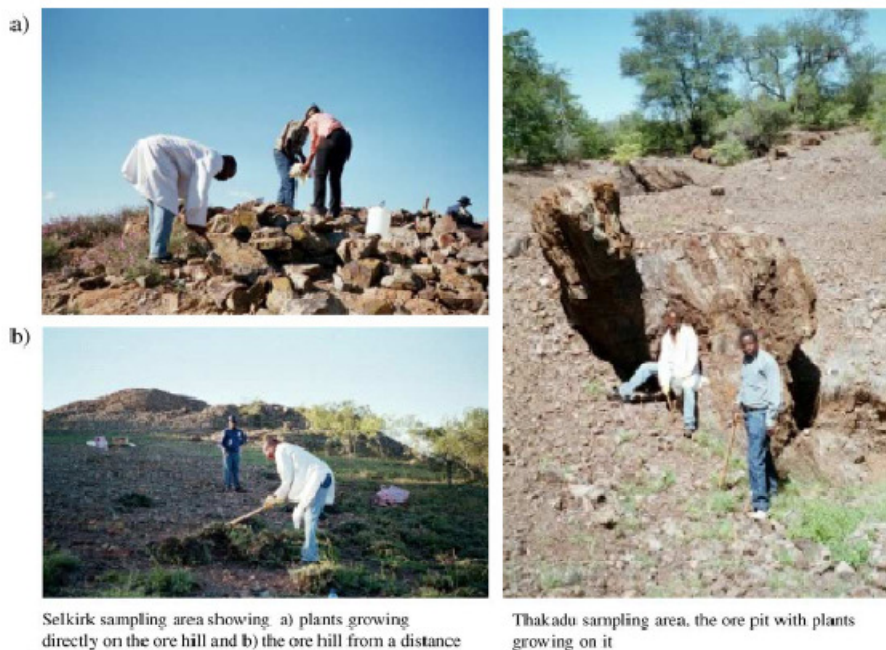
## 2.3. Sampling and samples

### 2.3.1. Sampling locations

All plants and soils were collected from four Cu–Ni mineralized areas in the North-Eastern part of Botswana as indicated in the map of Botswana (Fig. 1). Also indicated in the map are the Global Positioning System (GPS) locations obtained from the eTrex personal navigator (Garmin, 2000), a differential GPS accurate to within 5 m. Selkirk is an active copper mine; Nakalakwana is an abandoned copper excavation site; while Thakadu and Malaka are abandoned copper mines in the Matsitama area. Fig. 2 shows photographs of some of the sampling areas taken during sampling.

### 2.3.2. Sampling criteria

The criteria used for sampling was to collect samples that were young and growing as close to the ore body as possible. However, in some cases there were no plants growing on or next to the ore body and therefore plant samples were collected



Selkirk sampling area showing a) plants growing directly on the ore hill and b) the ore hill from a distance

Thakadu sampling area, the ore pit with plants growing on it

Fig. 2. Photographs of some sampling areas showing plants growing on the ore hill or pit.

where they were available. For example, *H. candolleianum* plant species was found growing and hence collected from metal-rich soils, i.e., either the ore pit in Thakadu or at the foot of the ore hill in Selkirk, while *B. diversispina* was found in three places: Selkirk (away from the ore hill), Malaka and Nakalakwana in soils with relatively low metal content. Sampling was done twice: on 13th to 14th November 2002 and on 12th to 13th March 2003 on the same sampling locations.

### 2.3.3. Plant description

Fig. 3 shows photographs of the plants. *H. candolleianum* was collected from Thakadu and Selkirk and the species was deposited at the University of Botswana Herbarium with voucher number 03SELHC1 and herbarium number UCBG 3318. It is a small, short (about 20 cm high, but can grow to a height of about 45 cm) herb, with a woody base, glossy silver-white flowers that are pinkish in the inside and with hairy leaves. *H. candolleianum* belongs to the Asteraceae family and grows in the Pretoria/Magaliesburg region, South Africa, all year round (Van Wyk and Malan, 1988), Eastern Zimbabwe and in other parts of Southern Africa (Huxley, 1992).

*B. diversispina* was collected from Malaka and Nakalakwana and was identified by Dr Kaj Vollesen, Kew Herbarium Royal Botanical Gardens, UK with voucher number, 03 MAK BD1. *B. diversispina* is a shrub, with purple-bluish flowers. This plant was also found at Selkirk, about 150–200 m away from the ore body (metal-rich soil). *B. diver-*

Table 1

a) Instrumental parameters b) furnace programmes for determination of Cu and Ni by slurry sampling ETAAS

a)			
Parameter	Copper	Nickel	
Wavelength (nm)	222.6	232.0	
Slit width (nm)	0.2	0.2	
Lamp current (mA)	10	6	
Sample volume ( $\mu$ l)	20	20	
Calibration range (mg/L)	0.4–2.0	0.2–1.0	
b)			
Step	Temperature ( $^{\circ}$ C)	Ramp time (s)	Hold time (s)
Drying 1	80	15	45
Drying 2	110	15	5
Ashing	Cu: 800 Ni: 900	15	30
Atomization	Cu: 2300 Ni: 2600	0	2
Cleaning	Cu: 2600 Ni: 2700	1	2

*ispina* belongs to the family Acanthaceae, which consists of 250 genera and 2500 species (Arnold and de Wet, 1975). The genus *Blepharis* is known to have 100 species, of which 80 are distributed from Africa to East Indies. About 50 species are found in Southern Africa and 11 are present in Botswana (Barnes et al., 1994). *B. diversispina* is quite widespread over much of Eastern and North-eastern Botswana.

### 2.3.4. Sample collection and preparation

Relatively young plants were dug from the ground using gloves and a hand spade. After removing soil lumps, the plants were washed with deionised water



A. *Helichrysum candolleianum* from Thakadu

B. *Blepharis diversispina* from Nakalakwana

Fig. 3. The photographs of the plants under study growing in their natural environment.

and rinsed with a water jet from a water bottle onto stubborn areas. Excess water was shaken off the plant samples and the samples were placed into labelled polyethylene bags. For each plant sample, soil from a depth of about 15 cm from where each plant was sampled, was collected into labeled polyethylene bags.

The plant parts (roots, stem, leaves, flowers) were pruned using tweezers. Thereafter, both the plant and soil samples were treated the same way. The samples were left to air-dry in petri-dishes for a few days. The dried samples were ground manually with agate pestle and mortar and further ground in the mixer mill for 60 min to a fine powder (less than 63  $\mu\text{m}$ ).

#### 2.4. Analytical procedures

All laboratory equipment was cleaned with (1+1) nitric acid and rinsed with deionised water. The slurry sampling ETAAS procedure, which is discussed in detail in our previous work (Takuwa et al., 1997), is briefly outlined below. Reference and sample materials (soil or plant of particle size less than 63  $\mu\text{m}$ ) were accurately weighed (1.0–4.0 mg) into the 2 ml autosampler vials and 1 ml of the diluent (5% (v/v)  $\text{HNO}_3$  and 0.05% Triton X-100) was added. Before injection into the graphite furnace, the samples were manually homogenized using a hand held ultrasonic probe (30 W, 25 s). Five individual slurry preparations ( $n=5$ ) were analysed for each sample material. The parameters and furnace programme used in the ETAAS determination of Cu and Ni in the slurries (soil and plants) are given in Table 1.

### 3. Results and discussions

#### 3.1. Quality control

For every set of real soil and plant samples, a suitable CRM was also analysed. The recoveries obtained for soil CRMs were in the ranges: 96–102% for Cu and 85–101% for Ni. For plant CRM, the recoveries were: 98–105% for Cu and 89–111% for Ni. The RSDs were below 5% for Cu and below 8% for Ni.

#### 3.2. Metal concentration in soils

The results, as shown in Tables 2 and 3, indicate that most of the soil samples, where the plants were collected, had copper and nickel concentrations higher than normal soils, i.e., higher than 5–100  $\mu\text{g/g}$  Cu and 20  $\mu\text{g/g}$  Ni (Adriano, 2001). The soils from Selkirk and Thakadu showed severe copper mineralization. Malaka and Nakalakwana areas had normal to slightly elevated levels of copper in the soils. The soils collected from Selkirk and Thakadu contained more copper than nickel. Selkirk soils had higher nickel concentrations than Thakadu soils, which had nickel concentration of the same order of magnitude as soils from Malaka and Nakalakwana (Table 2). Table 3 also shows results for the metal transfer coefficients (TCs) that will be discussed in the later sections.

#### 3.3. Metal accumulation in plants

The sampling and sample preparation of plants, can introduce high errors in the final analytical results

Table 2  
Sampling area information and metal concentration range in soils (% (w/w),  $n=5$ ) collected from Selkirk, Thakadu, Malaka and Nakalakwana, where plants were sampled

Place	Status	Soil concentration range		Where collected	Comment
		Ni (% w/w)	Cu (% w/w)		
Selkirk	Active Cu–Ni mine	0.08–0.3	0.3–4.3	Collected at the foot of the ore hill	Severe mineralization
Thakadu	Abandoned Cu–Ni mining site	0.009–0.015	1.5–4.3	Collected along the ore pit (20–30 m)	Severe mineralization
Malaka	Abandoned Cu–Ni mining site	0.007–0.014	0.004–0.05	Collected 15–20 m from the ore body	Slightly mineralised
Nakalakwana	Abandoned Cu–Ni excavation site	0.006–0.009	0.004–0.008	Collected 15–20 m from the ore body	Within normal conc. for Cu. Higher than normal conc. for Ni

Table 3

Total soil copper and nickel concentration ( $n=5$ ) and the metal transfer coefficient (ratio of the leaf metal concentration to the soil metal concentration) (TC), for *B. diversispina* and *H. candolleianum* collected from Selkirk (S), Thakadu (T), Malaka (M) and Nakalakwana (N) sampling locations

Plant	Copper			Nickel		
	Sample <sup>a</sup>	Soil conc. (% w/w)	TC	Sample <sup>a</sup>	Soil conc. (% w/w)	TC
<i>B. diversispina</i>	N1	0.004	0.4	N3	0.006	1.8
	N2	0.004	0.4	N2	0.007	0.3
	N3	0.008	0.2	M3	0.007	0.1
	M1	0.02	0.1	N1	0.008	0.04
	M2	0.03	0.05	M2	0.009	0.1
	M4	0.05	0.06	M1	0.014	1.8
	M3	0.05	0.08	M4	N/A <sup>b</sup>	N/A <sup>b</sup>
<i>H. candolleianum</i>	S1	0.3	0.01	T4	0.009	0.1
	S2	0.7	0.05	T3	0.01	0.2
	S3	1.5	0.04	T2	0.011	0.09
	T1	1.5	0.04	T1	0.013	0.04
	T2	2.6	0.03	T5	0.015	0.1
	T3	2.9	0.04	S3	0.075	0.07
	T4	3.4	0.06	S1	0.095	0.1
	T5	4.3	0.05	S2	0.26	0.1

<sup>a</sup> For each plant sample, the first letter (N, M, S and T) represents the sampling location (the number that follows is arbitrary).

<sup>b</sup> N/A stands for not analysed.

(Hall, 1995; Kovacheva et al., 2000). Contamination from soil may contribute to this error, especially in the roots which are difficult to clean adequately. There-

fore, soil particles must be removed before chemical analysis. However, there is some debate regarding the need to wash plant samples (Hall, 1995). Some work-

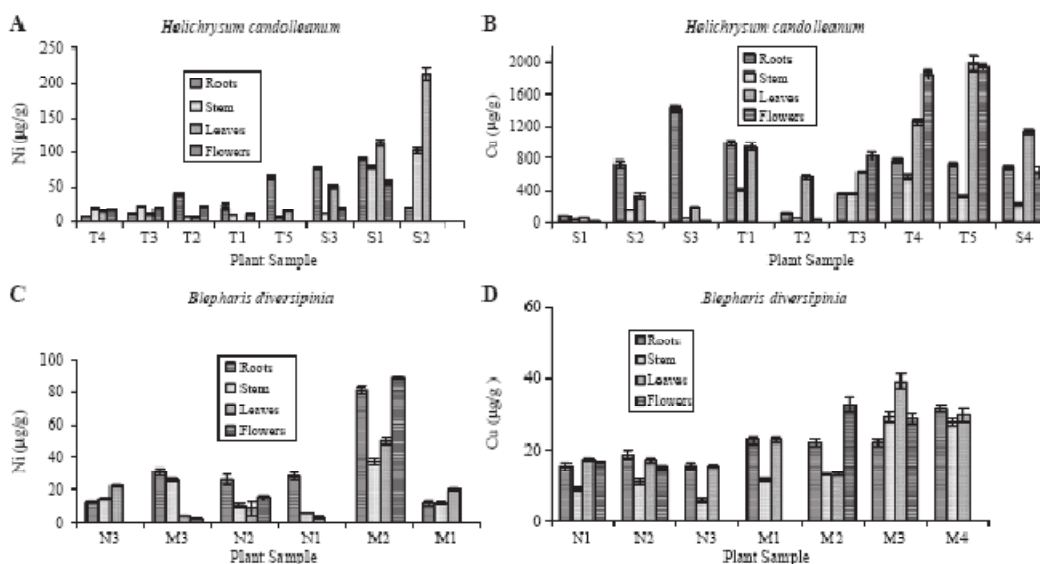


Fig. 4. Ni and Cu concentrations ( $n=5$ ) in plant parts of *Helichrysum candolleianum* (A and B) and *Blepharis diversispina* (C and D) plant species, arranged according to increasing soil metal concentration from left to right.



ers find it unnecessary to wash leaves from places of uncovered mineralization (Dunn, 1992), whereas for plants collected from arid areas or close to active mining areas washing is clearly necessary (Brooks, 1998c). Metal complexing agents such as EDTA (Ottaviani and Magnati, 1986), organic solvents such as chloroform (Hall, 1995) and water (Takuwa et al., 1997), have been used as washing solutions in the analysis of plants. The decision whether to wash, and how, lies with the individual researchers after assessing their specific situation (the type of plant, and the extent to which sampling environment has contaminated the plant) (Dunn, 1992; Hall, 1995). In this work, washing with water, as described in Section 2.3.4, was considered adequate.

Fig. 4 shows copper and nickel concentrations in the respective plant parts (roots, stem, leaves and flowers) for both *H. candolleianum* and *B. diversispina* arranged for each graph, from left to right, according to increasing metal concentration in the soil. Both plants had metal concentrations higher than concentrations normally found in plants and therefore should be categorized as metalophytes. The amount of copper required

for normal plant growth is 5–20 µg/g; concentrations below 5 µg/g are considered deficient and above 20 µg/g toxic (Adriano, 2001; Kabata-Pendias and Pendias, 1984; Loneragan and Robson, 1981). Plants that tolerate high levels of copper, i.e., indicator plants, have a copper concentration range of 30–500 µg/g (Adriano, 2001). Nickel concentration in plants growing in normal soils ranges from 0.1 to 1.0 µg/g (Baker and Brooks, 1989) and seldom exceeds 5 µg/g (Adriano, 2001), but for plants growing in serpentine areas, nickel concentration is usually around 50 µg/g, seldom exceeding 100 µg/g (Brooks, 1972; Adriano, 2001).

### 3.3.1. *H. candolleianum* plant species

At relatively low metal concentration in the soil, *H. candolleianum* accumulated most nickel in the root or stem (i.e., from T4 to S3, Fig. 4A), while copper accumulated mostly in the roots (i.e., from S1 to T1, Fig. 4B). For both metals, the leaf to root metal concentration ratio was less than 1.0, for soil metal concentrations of about 0.07% or less Ni and about 1.5% Cu or less, as illustrated in Fig. 5A and B, respectively. Above 0.1% Ni and 2.5% Cu, *H. can-*

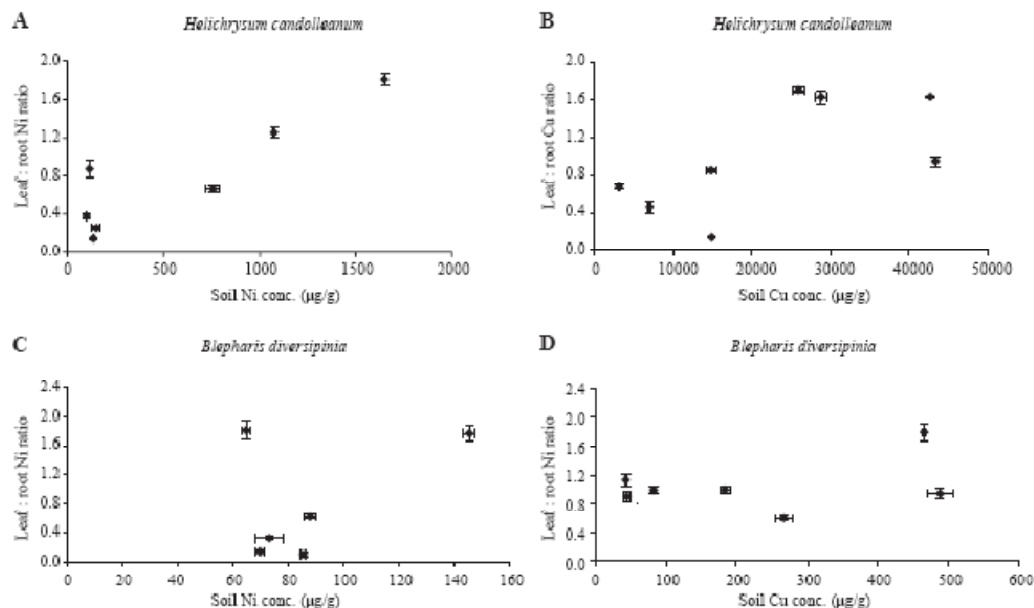


Fig. 5. A plot of leaf to root metal concentration ratio ( $n=5$ ) for *Helichrysum candolleianum* (A and B) and *Blepharis diversispina* (C and D) plant against metal concentration in the soil collected from Selkirk, Thakadu, Malaka and Nakalakwana sampling locations.

*dolleanum* accumulated the most metal in the leaves or the flowers (S1 and S2 for Ni, and T2 to S4 for Cu in Fig. 4A and B, respectively), and the leaf to root metal concentration ratio was greater than 1.0 (Fig. 5A and B). In most cases, the lowest copper accumulation was found in the stem. In some cases, concentrations larger than 0.1% Cu were found in the leaves or flowers of *H. candolleianum*, as illustrated by plant samples T4, T5 and S4 in Fig. 4B, indicating Cu hyperaccumulation (Brooks, 1983; Baker and Brooks, 1989). Baker and Whiting (2002) have pointed out that the limits set for hyper-accumulators are only guidelines meant to help recognize extreme behaviour. We believe that *H. candolleianum* has shown this extreme behaviour and may be a potential copper hyperaccumulator.

Fig. 5 shows the leaf to root metal concentration ratio, to illustrate the translocation of the metal from the root to the shoot. For both metals, there is an increase in the ratio as the soil metal concentration increases, although in different patterns (Fig. 5A and B). A linear increase can be observed for Ni (except for one point), whereas a two-stage increase can be observed for Cu. The Ni ratio was as high as 9.6 at very high Ni (0.3%) soil concentration (data not shown). Thus, *H. candolleianum*, has displayed indicator plant behaviour. Translocation from the root to the higher plant parts occurred at much lower soil metal concentrations for nickel than for copper, about 0.1% Ni compared to about 2.5% Cu as can be seen in Fig. 5A and B. Generally, Ni is highly mobile once taken up by plants, with the shoots being the sink (Adriano, 2001). Baker and Brooks (1989) have pointed out that 'it is only for very high concentrations in the soil that exclusion mechanism breaks down'. Our results show that below a certain concentration in the soil (threshold concentration), according to Fig. 5 A and B, about 0.07% or less for Ni and about 1.5% or less for Cu, *H. candolleianum* acted as an excluder; while above 0.1% for Ni and 2.5% for Cu, it acted as an accumulator plant. Baker (1981) concluded that 'a species may act as an accumulator, an indicator and excluder over different ranges of soil metal concentration', and this seems to be the case for *H. candolleianum*. The different metal tolerance behaviours displayed by *H. candolleianum* suggests a dependency on both metal type and soil metal concentration. Therefore, further investigation on the apparent soil metal threshold concentrations,

and the presence of other metals in high amounts in the soil and plant (i.e., total metal burden) that could influence the metal uptake by the plants and subsequent translocation, is warranted.

In the locations investigated, *H. candolleianum* was always found growing in Cu-rich soils (in the pit or around the ore hill) and not in normal or weakly mineralised soils. This trait, together with the findings discussed above, make *H. candolleianum* a good candidate for biogeochemical prospecting i.e., it may be one of the species that could indicate copper mineralisation "without inordinate uptake of this element" as described by Brooks (1998a). Its presence alone may also be used to indicate Cu mineralization, i.e., biogeo-botanical prospecting, although not necessarily very rich Cu mineralization as this study has revealed.

### 3.3.2. *B. diversispina* plant species

This plant species was collected from areas with relatively low soil copper and nickel concentrations (40–500 µg/g Cu and 60–140 µg/g Ni) at Malaka and Nakalakwana. Unlike *H. candolleianum*, it was never found growing in Cu-rich places such as the ore pit or the ore hill.

The Ni accumulation pattern in *B. diversispina* is less conclusive (Figs. 4C and 5C). The results show that Cu was evenly distributed in all plant parts (*T*-test at 95% confidence level) of *B. diversispina* except in the stem where it accumulated the least in all cases except one (Fig. 4D). This is further demonstrated by a constant leaf to root metal concentration ratio  $\approx$  1.0 (i.e., 0.7 to 1.2, see Fig. 5D), except for one case. These results suggest that, at the soil Cu concentrations investigated, Cu accumulation for *B. diversispina* did not depend on the Cu concentration in the soil.

### 3.4. Metal transfer coefficients

In order to evaluate metal translocation from the soil to the shoots, i.e., find out how much of the total metal concentration in the soil the plant actually took up and transferred to the shoots, an operationally defined transfer coefficient (TC), also known as transfer function (Adriano, 2001; Henning et al., 2001), was calculated. It is defined as the ratio of the metal concentration in the plant  $[M]_{\text{plant}}$  to the total metal concentration in the soil  $[M]_{\text{soil}}$  (Adriano, 2001; Henning et al., 2001).

In this study we used the metal concentration in the leaf, and therefore  $[M]_{\text{plant}}$  is replaced by  $[M]_{\text{leaf}}$ , i.e.,  $\text{TC} = [M]_{\text{leaf}}/[M]_{\text{soil}}$ . The results are shown in Table 3.

As can be observed from Table 3, Cu TCs for *B. diversispina* decreased as the soil Cu concentration increased, suggesting that the uptake and translocation of Cu to the leaves is not proportional to the soil Cu concentration. The Ni TCs for *B. diversispina* did not show any conclusive pattern, an observation similar to the one made above in Figs. 4C and 5C. Transfer coefficients for the *H. candolleianum* varied little over a wide metal concentration range in the soil, for both metals (0.04–0.06 for Cu, and 0.04–0.1 for Ni), except for S1 in the case of Cu and T3 in the case of Ni. These results suggest metal uptake that is dependent on the soil metal concentration for both metals in *H. candolleianum*.

Further investigations on the metal uptake and its dependency on the soil concentrations (especially *B. diversispina* at elevated concentrations) as well as metal uptake and transport mechanisms for the two plant species are warranted. Mechanisms for metal uptake are known to be both metal and species specific (Kabata-Pendias and Pendias, 1984; Adriano, 2001). The different mechanisms for metal uptake by plant roots, may involve processes such as cation exchange by the roots, transport inside cells by chelating agents and other carriers and rhizosphere effects (Kabata-Pendias and Pendias, 1984).

#### 4. Conclusions

Of the four sampling locations, Selkirk and Thakadu exhibited severe copper mineralization with soil metal concentrations in the range 0.3–4% (w/w), while Malaka and Nakalakwana had normal to slightly copper mineralised soils (40–500  $\mu\text{g/g}$ ). All soils had nickel concentration above the normal average concentration of 20  $\mu\text{g/g}$  Ni, with Selkirk soils having the highest nickel content ~0.3% (w/w).

Both plant species showed tolerance to high copper–nickel content and therefore should be categorized as metallophytes. The concentration ranges of the elements in the plant parts were: 20  $\mu\text{g/g}$ –0.2% (w/w) Cu and 6–210  $\mu\text{g/g}$  Ni for *H. candolleianum*, and 6  $\mu\text{g/g}$ –40  $\mu\text{g/g}$  Cu and 3–90  $\mu\text{g/g}$  Ni for *B. diversispina*. *H. candolleianum* plant species has the

tendency to accumulate and translocate Cu and Ni to the shoots (an accumulator) at high metal concentration in the soil, above 2.5% (w/w) Cu and 0.1% (w/w) Ni. Concentrations larger than 0.1% (w/w) Cu were found in the leaves and flowers of *H. candolleianum* plant species, and therefore it is a possible hyperaccumulator, but only at high soil Cu concentrations. *B. diversispina* showed an even distribution of Cu in all plant parts except the stem. The present work suggests that of the two plant species, *H. candolleianum* is the better candidate as a copper/nickel indicator that may be used in biogeochemical and biogeobotanical prospecting.

Our data also shows that the two species have different mechanisms of dealing with metal tolerance. This was illustrated at high soil metal content, by the leaf to root metal concentration ratio of greater than 1.0 for both metals in *H. candolleianum*, indicating metal accumulation. Furthermore, a constant leaf to root Cu concentration ratio, and decreasing Cu TCs with increasing Cu soil concentration, were observed for *B. diversispina*. There was no significant difference in the leaf metal transfer coefficients for both metals over a wide range of metal content in the soil for *H. candolleianum*, suggesting metal uptake and translocation mechanism that is dependent on the soil content. The significantly different trends suggest different Cu uptake and transport mechanisms for the two plant species. Further work to investigate metal uptake and translocation mechanisms of the two plant species under varying soil (substrate) conditions, preferably in a laboratory setup, needs to be done.

#### Acknowledgements

The authors are grateful for the financial assistance received from the Norwegian Universities Committee for Development Research and Education (NUFU), Norway; and the assistance obtained from the following departments at the University of Botswana: Department of Biology–Botany (for plant identification), Chemistry Department, the Natural Products Chemistry Research Group led by Professor B. Abegaz. We also thank Dr Kaj Vollesen, Kew Herbarium of The Royal Botanical Gardens for the identification of *B. diversispina* plant species.

## References

- Adriano, D.C., 2001. Trace Elements in Terrestrial Environments: Biochemistry, Bioavailability and Risks of Metals, 2nd ed. Springer-Verlag, New York.
- Arnold, T.H., de Wet, B.C., 1975. The Genera of Southern African Flowering Plants. Volume 1: Dicotyledons. National Botanical Institute, Pretoria, South Africa.
- Baker, A.J.M., 1981. Accumulators and excluders — strategies in the response of plants to heavy metals. *J. Plant Nutr.* 3, 643–654.
- Baker, A.J.M., Brooks, R.R., 1989. Terrestrial higher plants which accumulate metallic elements — a review of their distribution, ecology and phytochemistry. *Biorecovery* 1, 81–126.
- Baker, A.J.M., Whiting, S.N., 2002. In search of the holy grail — a further step in understanding metal hyperaccumulation? *New Phytol.* 155, 1–7.
- Barnes, J.E., Turton, L.M., Kalake, E., 1994. A List of Flowering Plants in Botswana. The Botswana Society, Gaborone, Botswana.
- Bert, V., Macnair, M.R., De Languerie, P., Saumitou-Laprade, P., Petit, D., 2000. Zinc tolerance and accumulation in metallicolous and nonmetallicolous populations of *Arabidopsis halleri* (Brassicaceae). *New Phytol.* 146, 225–233.
- Brooks, R.R., 1972. Geobotany and Biogeochemistry in Mineral Exploration. Harper and Row Publishers, New York, USA.
- Brooks, R.R., 1983. Biological Methods of Prospecting for Minerals. John Wiley and Sons, New York, USA.
- Brooks, R.R., 1998a. Biogeochemistry and hyperaccumulators. In: Brooks, R.R. (Ed.), Plants that Hyperaccumulate Heavy Metals. CAB International, Oxon UK, pp. 95–118.
- Brooks, R.R., 1998b. Biological methods of prospecting for minerals. *NZ BioSci* 6 (4), 6–7.
- Brooks, R.R., 1998c. Phytochemistry of hyperaccumulators. In: Brooks, R.R. (Ed.), Plants that Hyperaccumulate Heavy Metals. CAB International, Oxon UK, pp. 15–53.
- Brooks, R.R., Lee, J., Jaffré, T., 1977. Detection of nickeliferous rocks by analysis of herbarium specimens of indicator plants. *J. Geochem. Explor.* 7, 49–77.
- Brooks, R.R., Reeves, R.D., Morrison, R.S., Malaisse, F., 1980. Hyperaccumulation of copper and cobalt — a review. *Bull. Soc. Bot. Belg.* 133, 166–172.
- Brummer, J.J., Woodward, G.D., 1999. A history of the 'Zambian copper flower', *Becium centraliafricanum* (*B. homblei*). *J. Geochem. Explor.* 65, 133–140.
- Cole, M.M., 1971. The importance of environment in biogeographical/geobotanical and biogeochemical investigations. *Geochem. Explor., Proc., Int. Geochem. Explor. Symp.*, 3rd, Meeting Date 1970 11, 414–425.
- Cole, M.M., Le Roex, H.D., 1978. The role of geobotany, biogeochemistry and geochemistry in mineral exploration in South West Africa and Botswana — a case history. *Trans. Geol. Soc. S. Afr.* 81, 277–317.
- Dunn, C.E., 1992. Biological exploration for deposits of the noble metals. In: Brooks, R.R. (Ed.), Nobel Metals and Biological Systems: Their Role in Medicine, Mineral Exploration and the Environment. CRC Press, Boca Raton, pp. 47–89.
- Dunn, C.E., Brooks, R.R., Edmondson, J., Leblanc, M., Reeves, R.D., 1996. Biogeochemical studies of metal-tolerant plants from Southern Morocco. *J. Geochem. Explor.* 56, 13–22.
- Ekosse, G., Van Den Heever, D., De Jager, L., Totolo, O., 2003. Environmental mineralogy of soils around Selebi Phikwe nickel-copper plant, Botswana. *Int. J. Environ. Stud.* 60, 251–262.
- Frame, S.E.M., Anderson, D.A., 1996. Direct analysis of solids by slurry sampling—graphite furnace atomic absorption spectrometry. Technical Information Series, GE Research and Development Centre. General Electric Company.
- Garmin (Europe) Ltd., 2000. Romsey 5051 9AQ, UK. <http://www.garmin.com>.
- Hall, G.E.M., 1995. Sample preparation and decomposition. In: Brooks, R.R., Dunn, C.E., Hall, G.E.M. (Eds.), Biological Systems in Mineral Exploration and Processing. Ellis Horwood, New York, USA, pp. 429–442.
- Henning, B.J., Snyman, H.G., Aveling, T.A.S., 2001. Plant-soil interactions of sludge-borne heavy metals and the effect on maize (*Zea mays* L.) seedling growth. *Water S.A.* 27 (Jan.)
- Huxley, A., 1992. The New RHS Dictionary of Gardening. Macmillan Press, UK, ISBN: 0-333-47494-5.
- Kabat-Pendias, A., Pendias, H., 1984. Trace Metals in Soils and Plants. CRC Press Inc, Boca Raton, Florida USA.
- Kausel, G., 1991. Study of heavy metal tolerant flora in Botswana. *Botsw. Notes Rec.* 23, 158–174.
- Kovacheva, P., Djingova, R., Kuleff, I., 2000. On the representative sampling of plants for multielement analysis. *Phytol. Balc.* 6 (1), 91–102.
- Loneragan, J.F., Robson, A.D. (Eds.), 1981. Copper in Soils and Plants. Academic Press Inc, New York, USA.
- Malaisse, F., Baker, A.J.M., Ruelle, S., 1999. Diversity of plant communities and leaf heavy metal content at Luiswishi copper/cobalt mineralization, Upper Katanga, Dem. Rep. Congo. *Biotechnol. Agron. Soc. Environ. (Biotechnology Agronomy Society of Environment)* 3 (2), 104–114.
- Morrison, R.S., Brooks, R.R., Reeves, R.D., Malaisse, F., Horowitz, P., Aronson, M., Merriam, G.R., 1981. The diverse chemical forms of heavy metals in tissue extracts of some metallophytes from Shaba Province Zaire. *Phytochemistry* 20, 455–458.
- Ottaviani, M., Magnati, P., 1986. Atomic absorption spectrometric determination of the elemental contamination of the plant material. *J. Anal. At. Spectrom.* 1, 243–245.
- Ramocha, A.G., 2002. Slurry sampling electrothermal atomic absorption spectroscopy — surfactants for slurry sampling stabilization and application to analysis of mineralized soil samples. MSc Dissertation (unpublished), University of Botswana, Gaborone, Botswana.
- Raskin, I., Smith, R.D., Salt, D.E., 1997. Phytoremediation of metals: using plants to remove pollutants from the environment. *Curr. Opin. Biotech.* 8, 221–226.
- Reeves, R.D., Baker, A.J.M., 2000. Metal-accumulating plants. In: Raskin, I., Ensley, B.D. (Eds.), Phytoremediation of Toxic Metals: Using Plants to Clean Up the Environment. John Wiley and Sons Inc, New York, USA, pp. 193–229.
- Takuwa, D.T., 1995. Development of slurry sampling ETAAS methods for Cu, Ni, Mo, Cd and Zn in Botswana plants and

- soil samples. MSc. Progress report (unpublished), University of Botswana, Gaborone, Botswana.
- Takuwa, D.T., Sawula, G., Wibetoe, G., Lund, W., 1997. Determination of cobalt, nickel and copper in flowers, leaves, stem and roots of plants using ultrasonic sampling electrothermal atomic absorption spectrometry. *J. Anal. At. Spectrom.* 12, 849–854.
- Terry, N., Bañuelos, G. (Eds), 2000. *Phytoremediation of contaminated soil and water*, Lewis Publishers CRC Press LLC, Boca Raton, USA.
- Tilstone, G.H., Mcnair, M.R., 1997. The consequence of selection for copper tolerance on the uptake and accumulation of copper in *Mimulus guttatus*. *Ann. Bot.* 80, 747–751.
- Van der Lelie, D., Schwitzguebel, J.-P., Glass, D., Vangronsveld, J., Baker, A., 2001. Assessing phytoremediation's progress in the United States and Europe. *Environ. Sci. Technol.* 35, 446A–452A.
- Vassilev, A., Schwitzguebel, J.-P., Thewys, T., Van der Lelie, D., Vangronsveld, J., 2004. The use of plants for remediation of metal contaminated soils. *Sci. World* 4, 9–34.
- Van Wyk, B., Malan, S., 1988. *Field Guide to the Wild Flowers of the Witwatersrand and Pretoria Region*. Struik Publishers, Cape Town.